

Q-estimation from uncorrelated Vibroseis VSP model data

Arnim B. Haase
CREWES, University of Calgary



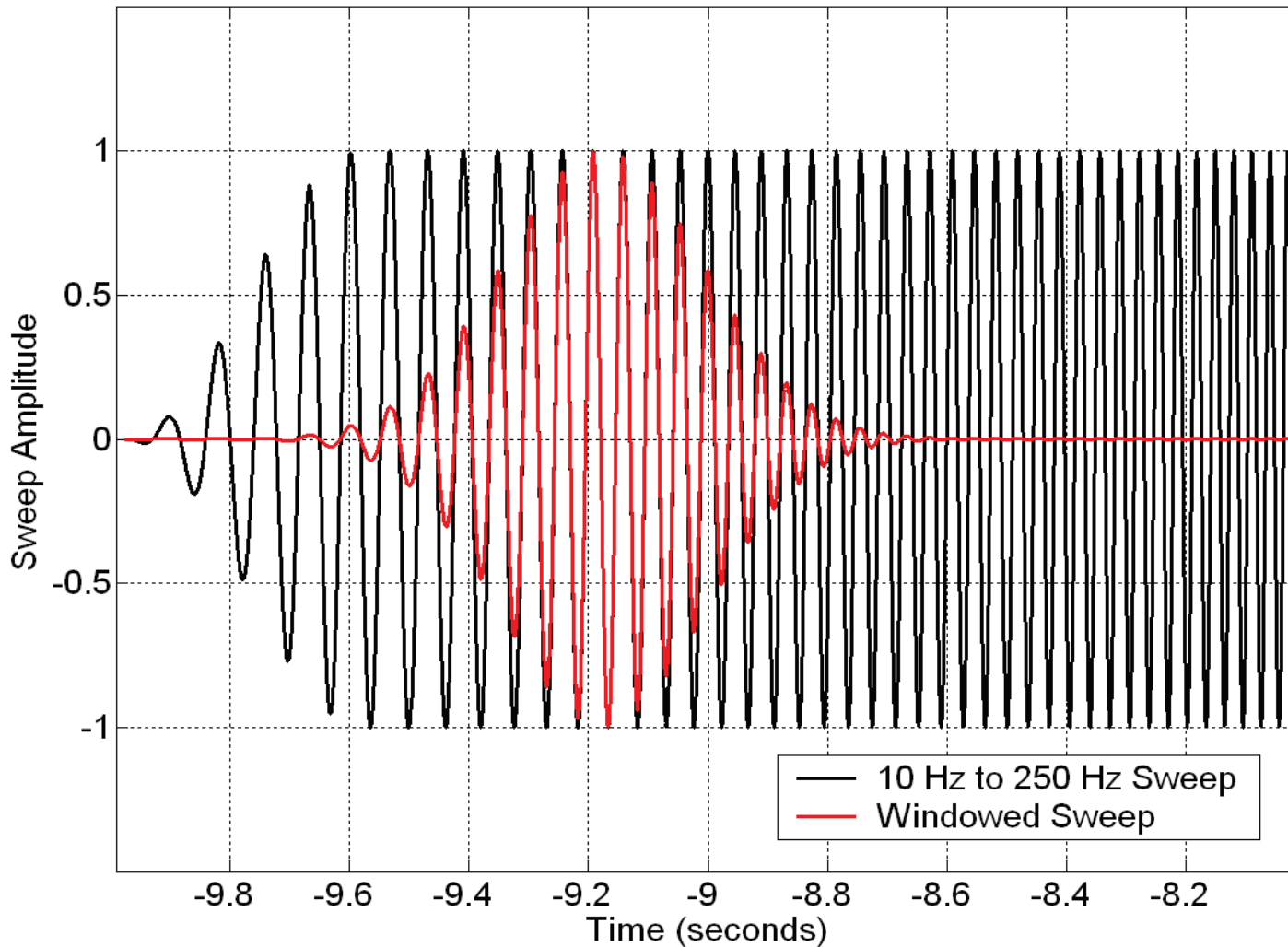
Outline

- ◆ Introduction
- ◆ Velocity dispersion (frequency dependent velocities $V(f)$)
- ◆ Moving window cross-correlation
- ◆ The role of sample interval Δt
- ◆ A homogeneous earth model
- ◆ The well-log derived model and stratigraphic attenuation/amplification
- ◆ Conclusions
- ◆ Acknowledgements

$$\frac{V(f_2)}{V(f_1)} \approx 1 + \frac{\ln(f_2/f_1)}{\pi Q}$$

$$Q = \frac{\ln(f_2/f_1)}{\pi \left(\frac{V(f_2)}{V(f_1)} - 1 \right)}$$

Velocity dispersion and Q-extraction

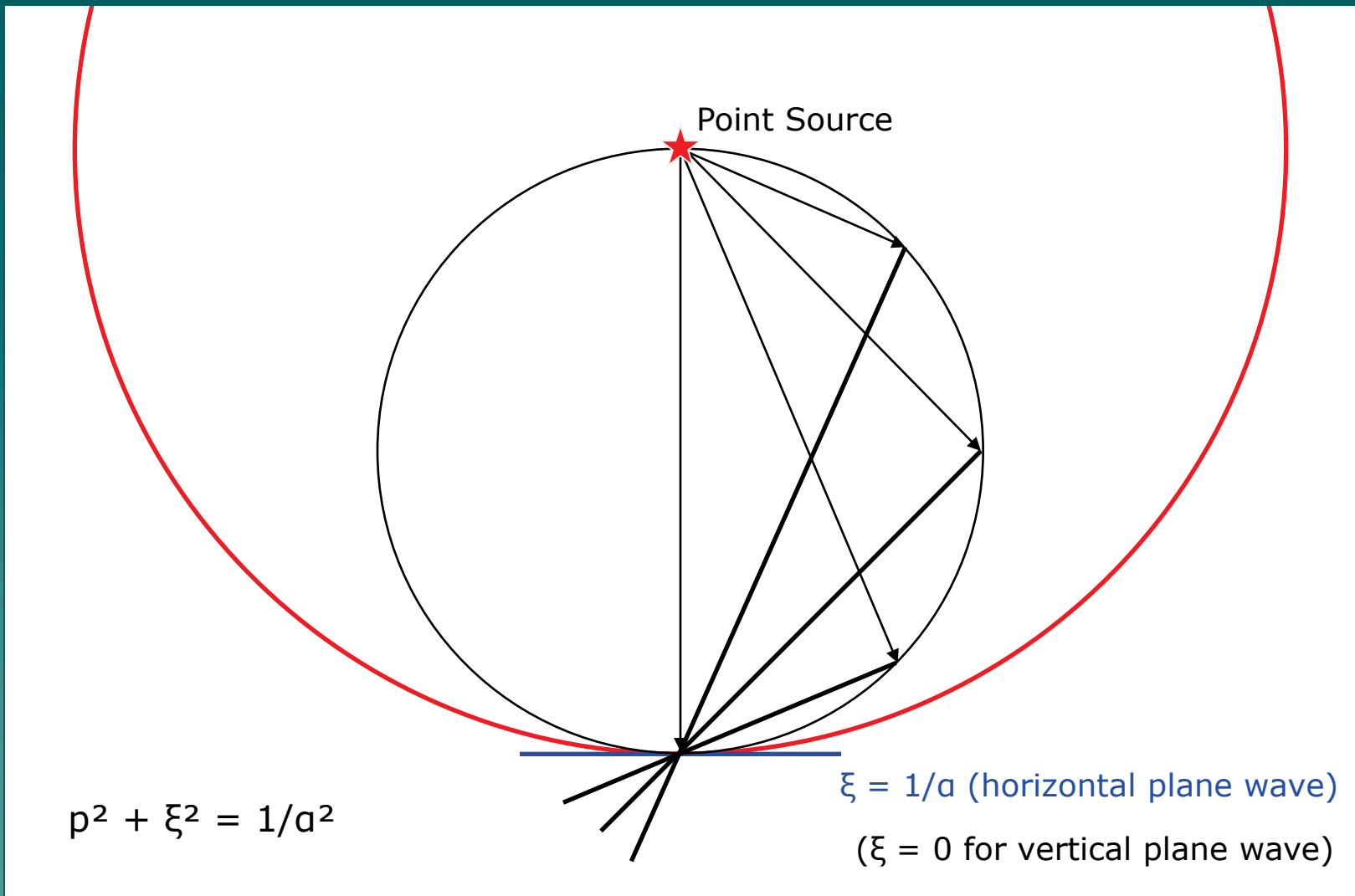


First part of a synthetic pilot sweep

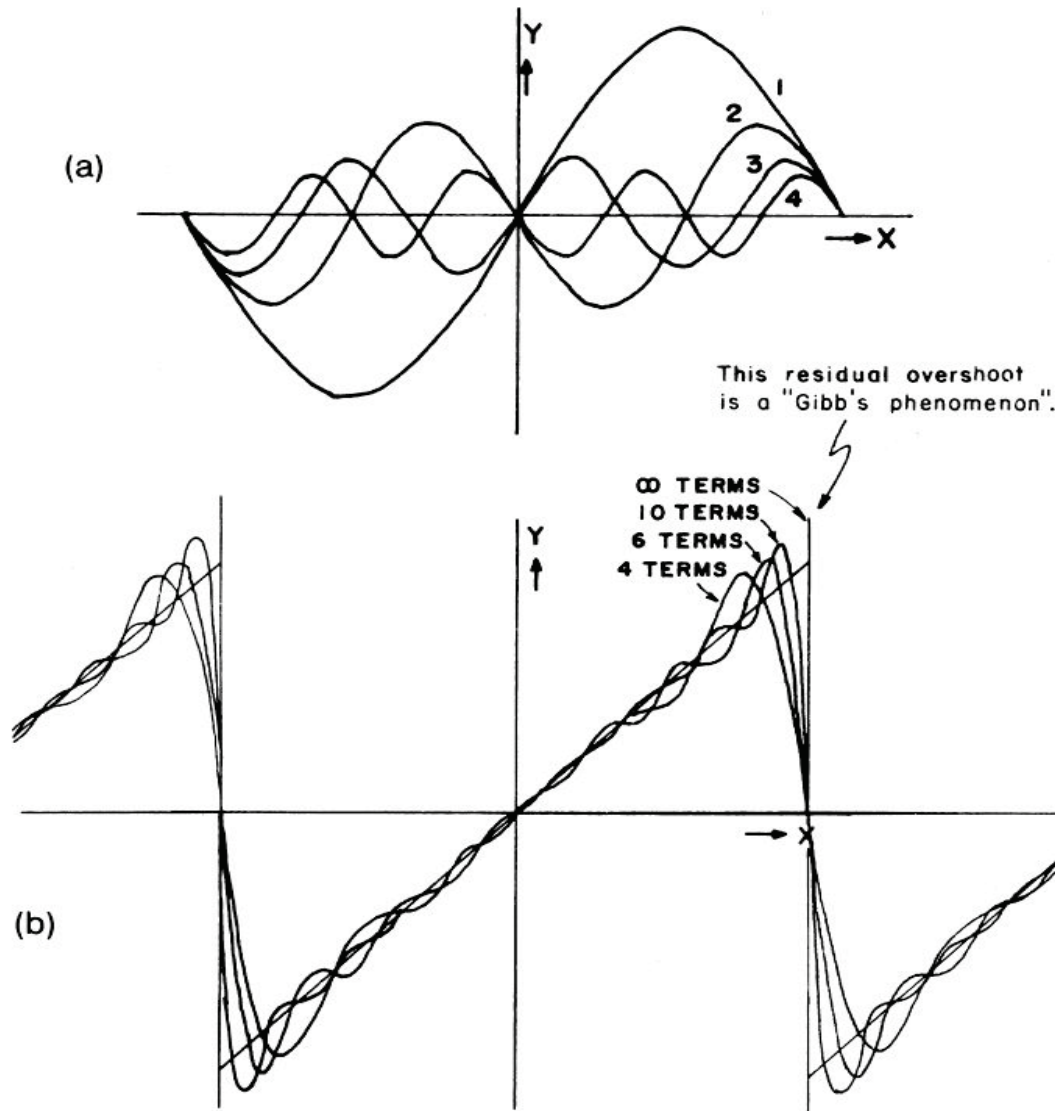
$$\varphi_j = \int_0^{\infty} Q'_j J_0(kr) e^{-v_j z} dk + \int_0^{\infty} Q''_j J_0(kr) e^{v_j z} dk$$

$$\psi_j = \int_0^{\infty} S'_j J_0(kr) e^{-v'_j z} dk + \int_0^{\infty} S''_j J_0(kr) e^{v'_j z} dk$$

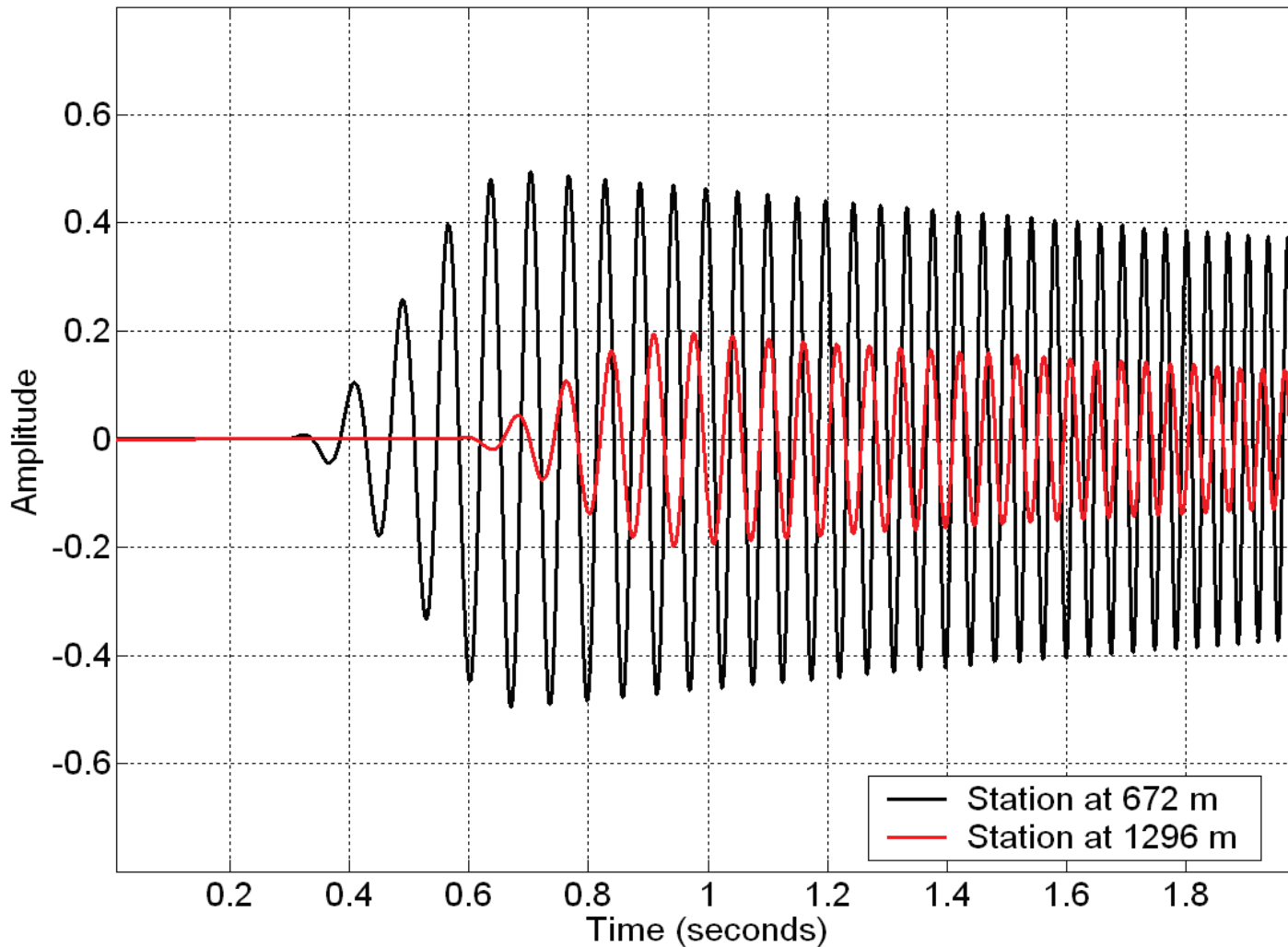
Potential of Down-Going and Up-Going Waves in Layer j (Ewing, Jardetzky and Press, 1957)



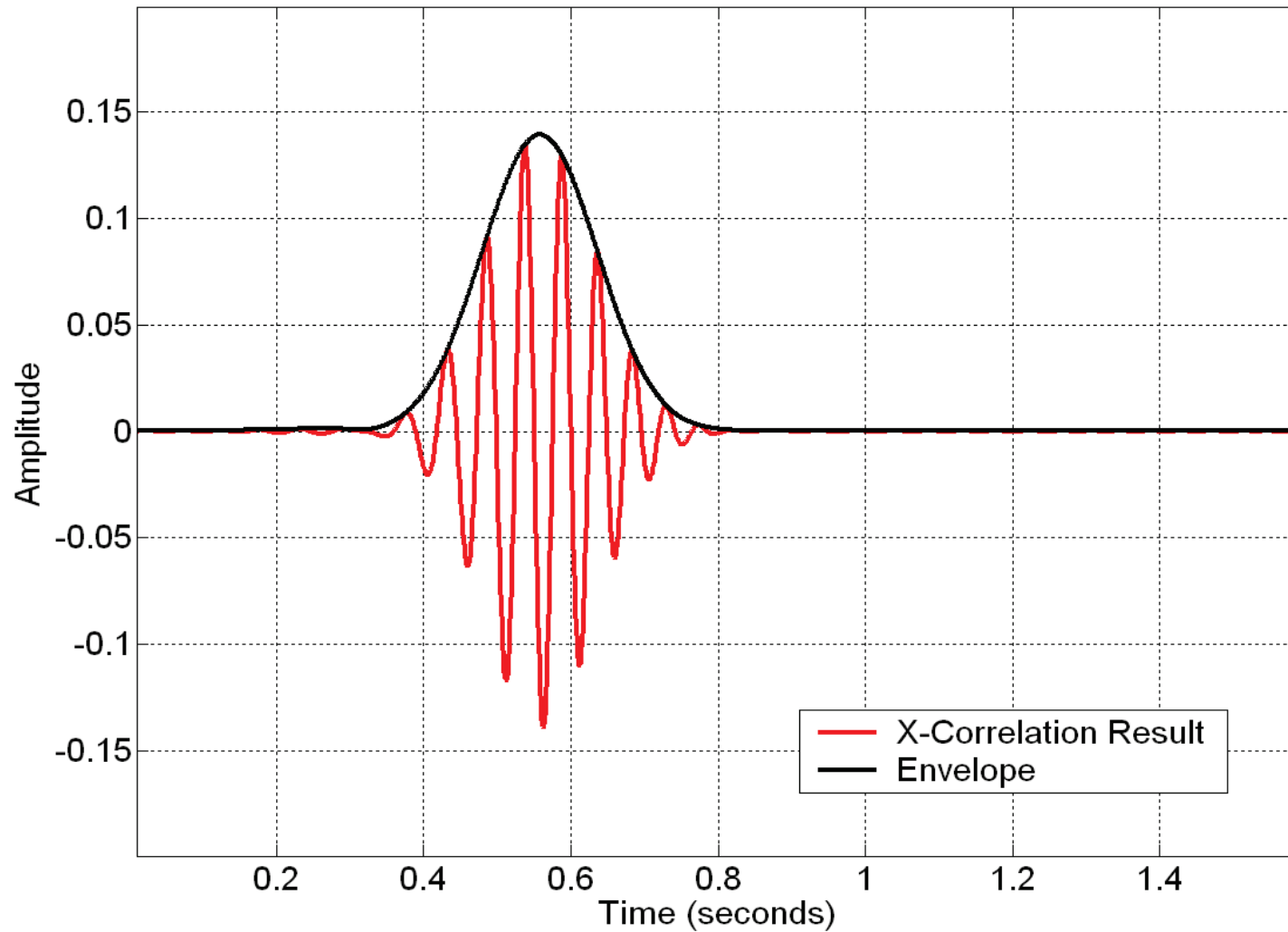
Plane Wave Components of a Spherical Wave



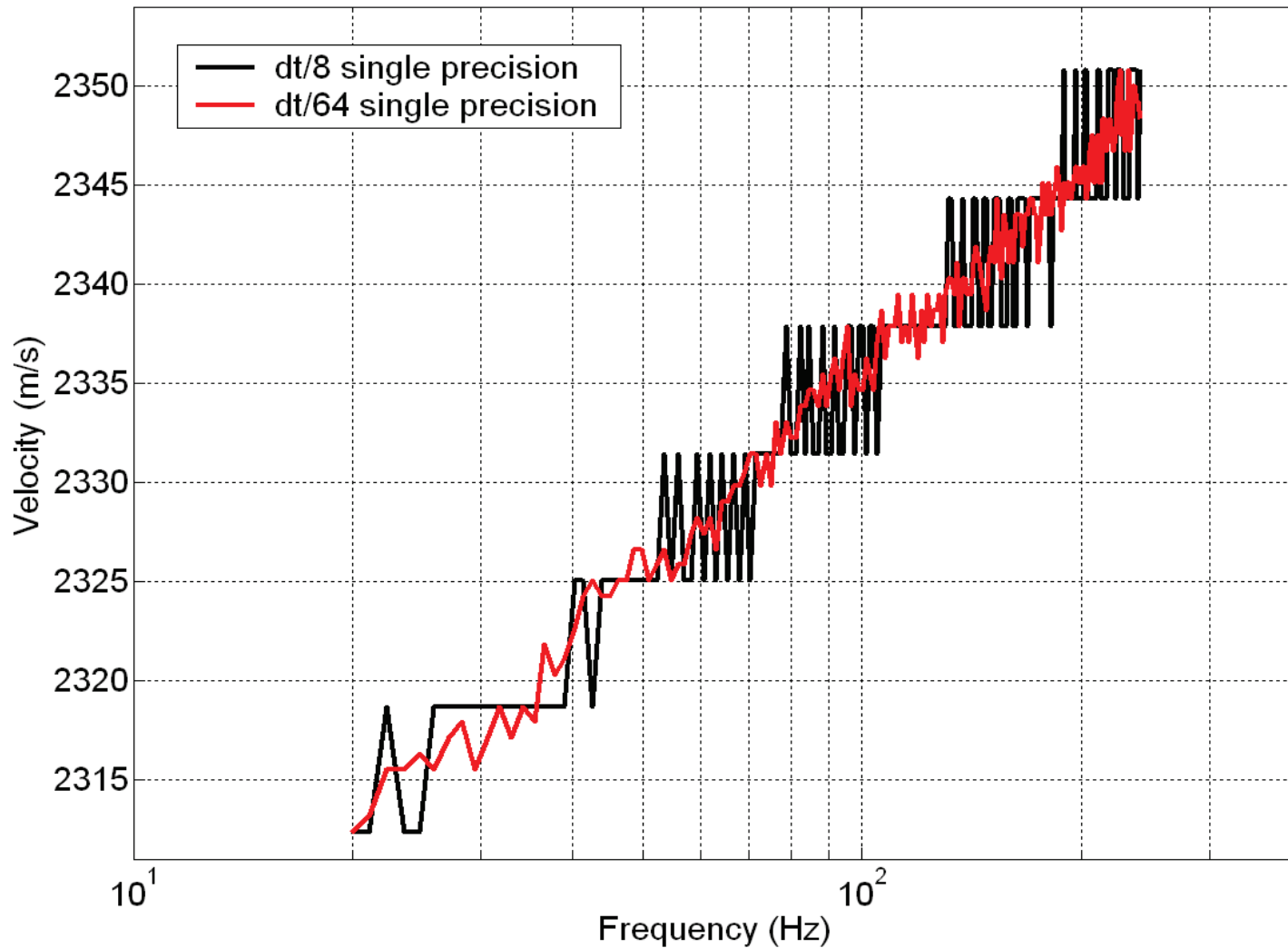
Frequency Components of a Waveform (Sheriff, 2002)



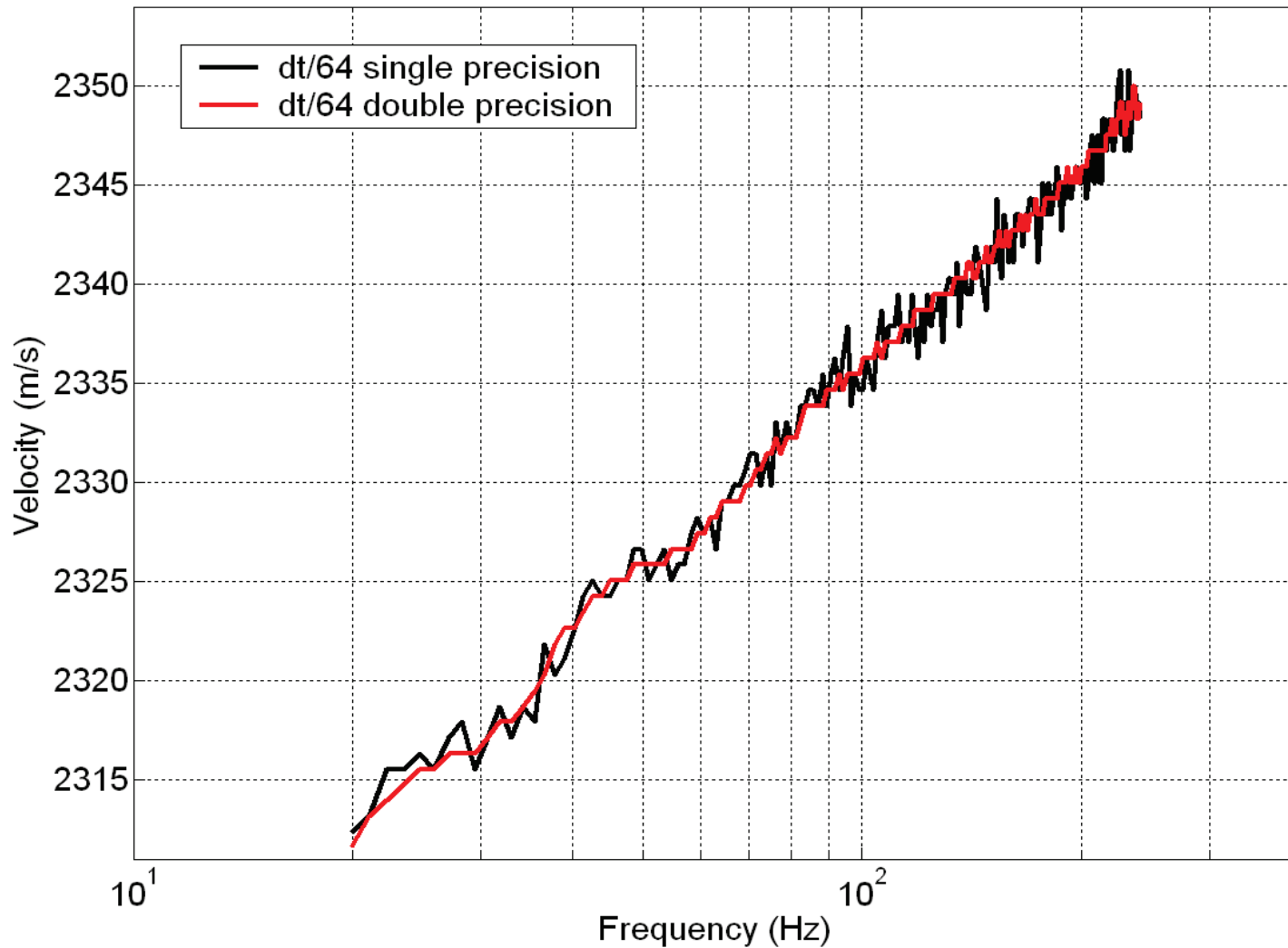
Uncorrelated VSP-trace as function of time



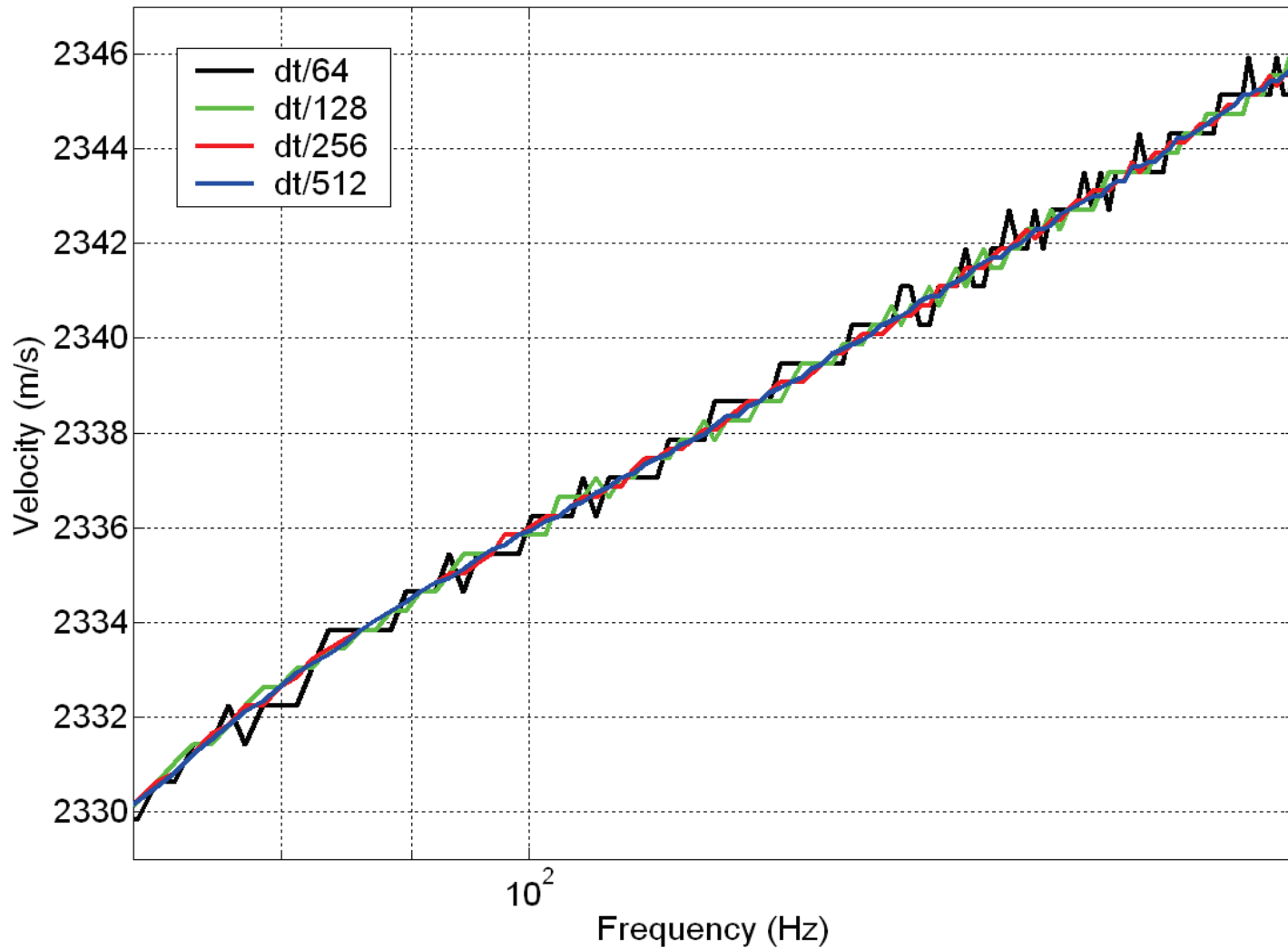
Cross-correlation of windowed sweep and VSP-trace



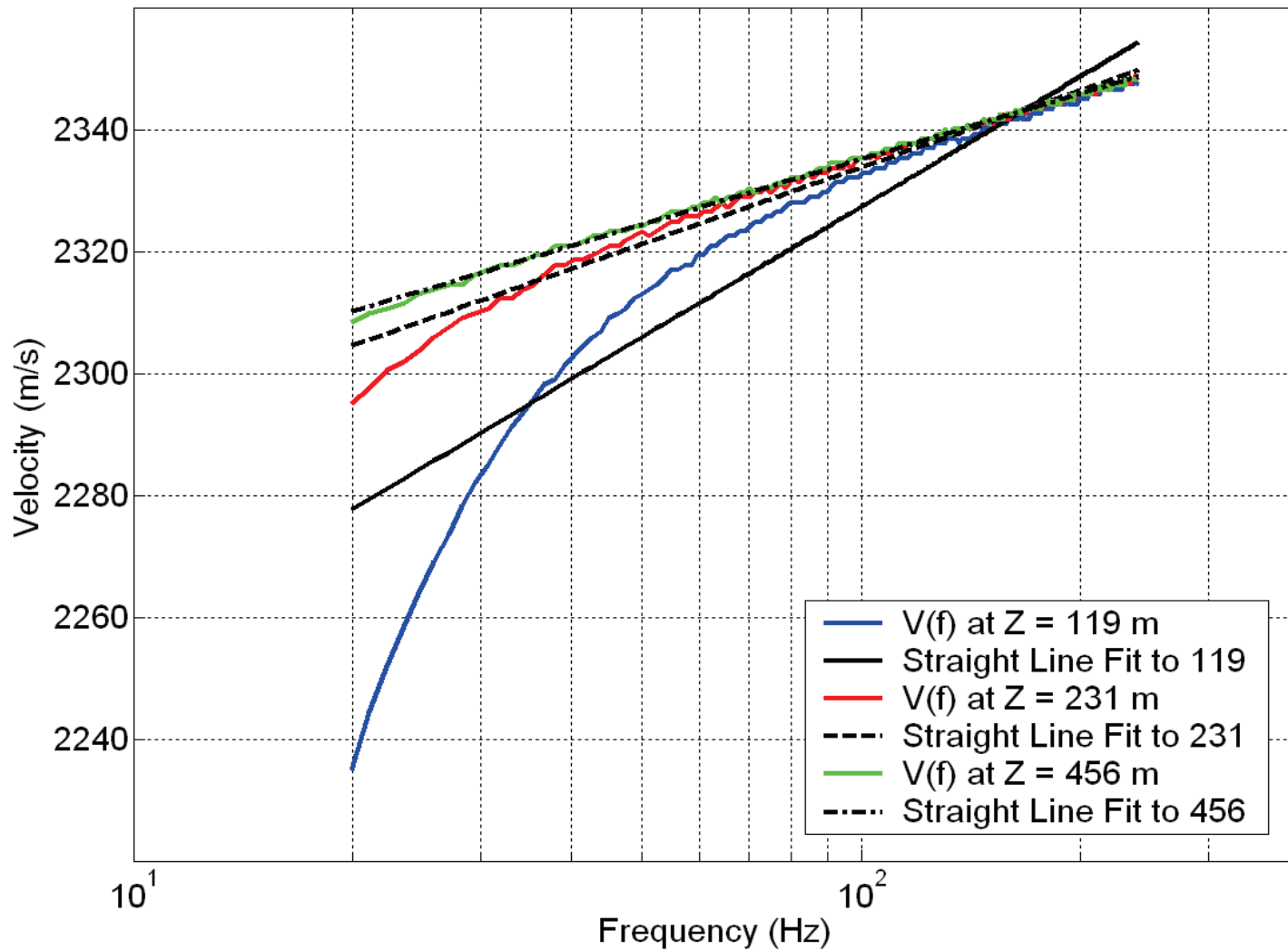
Velocity as function of frequency (sample interval test)



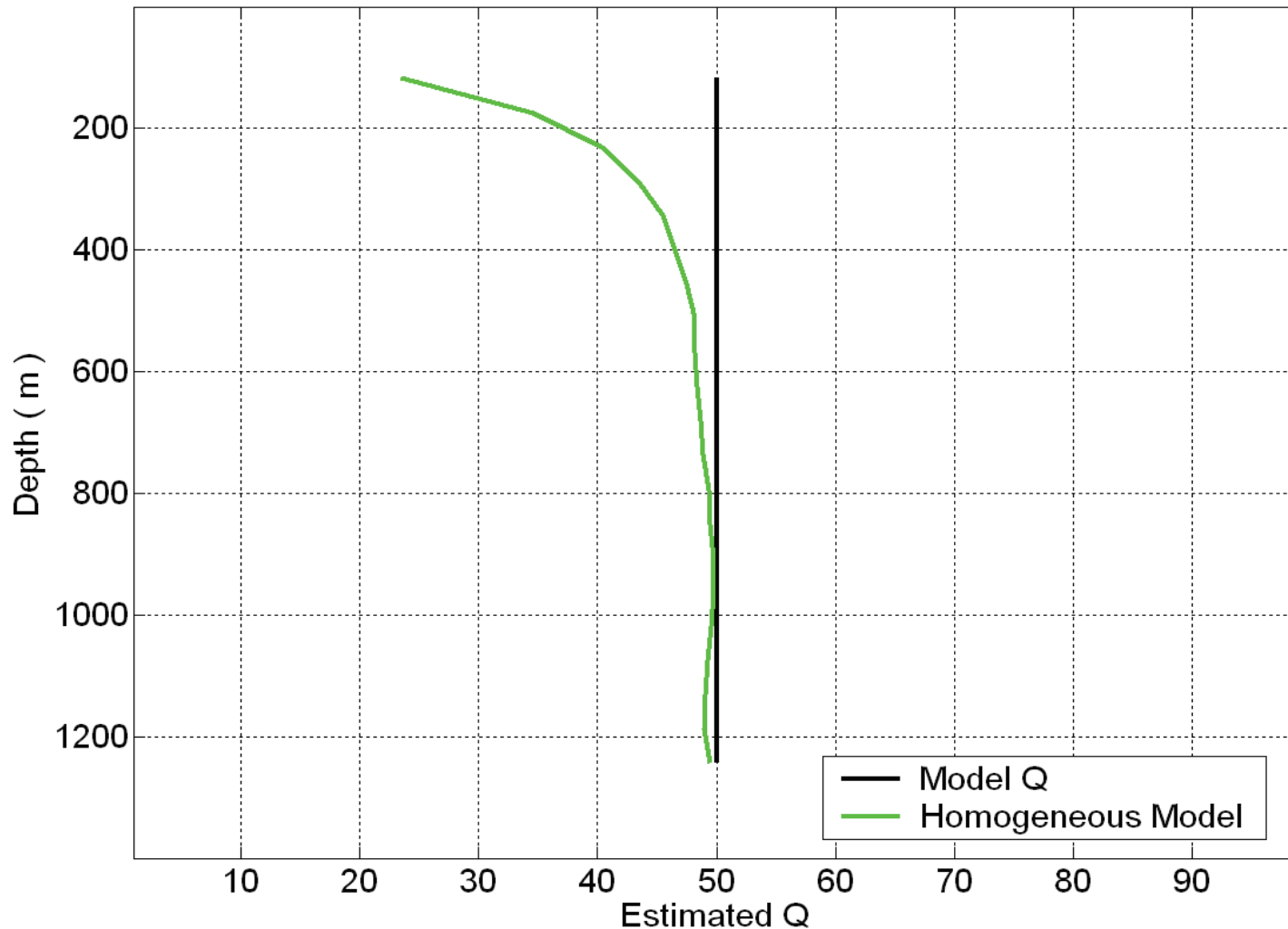
Velocity as function of frequ. (single/double precision)



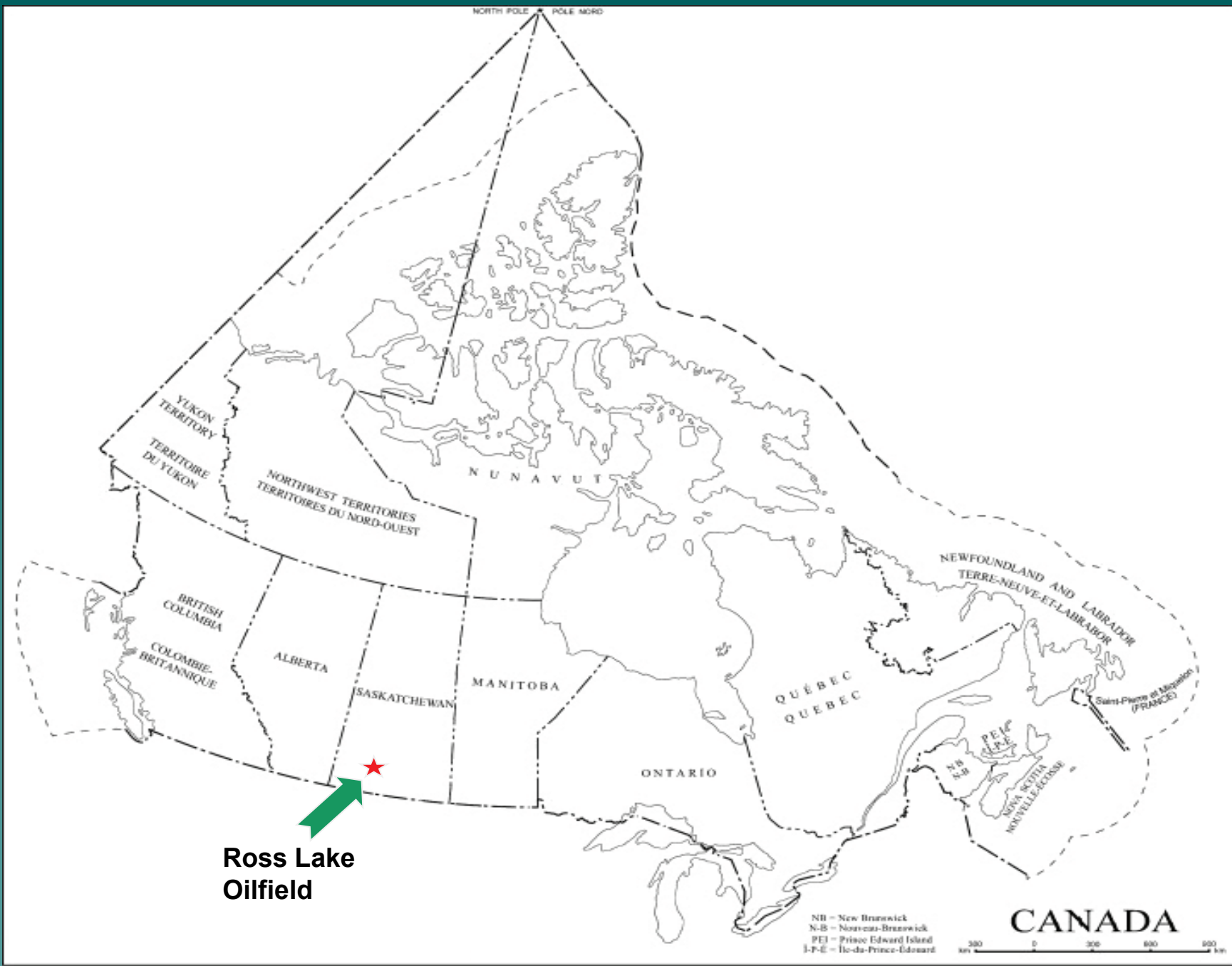
Velocity as function of frequency (sample interval test)



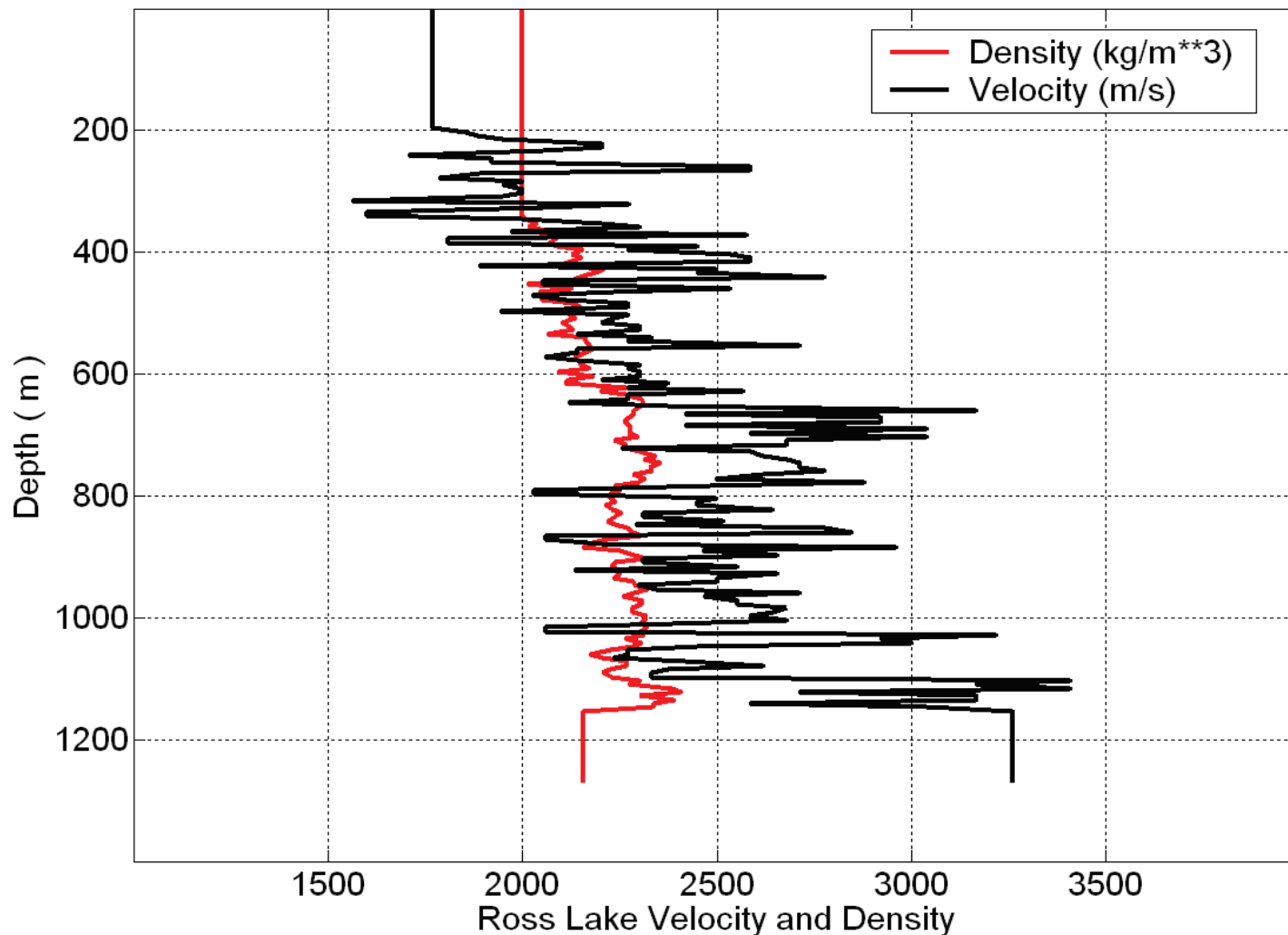
V(f) at different depths (homogeneous model)



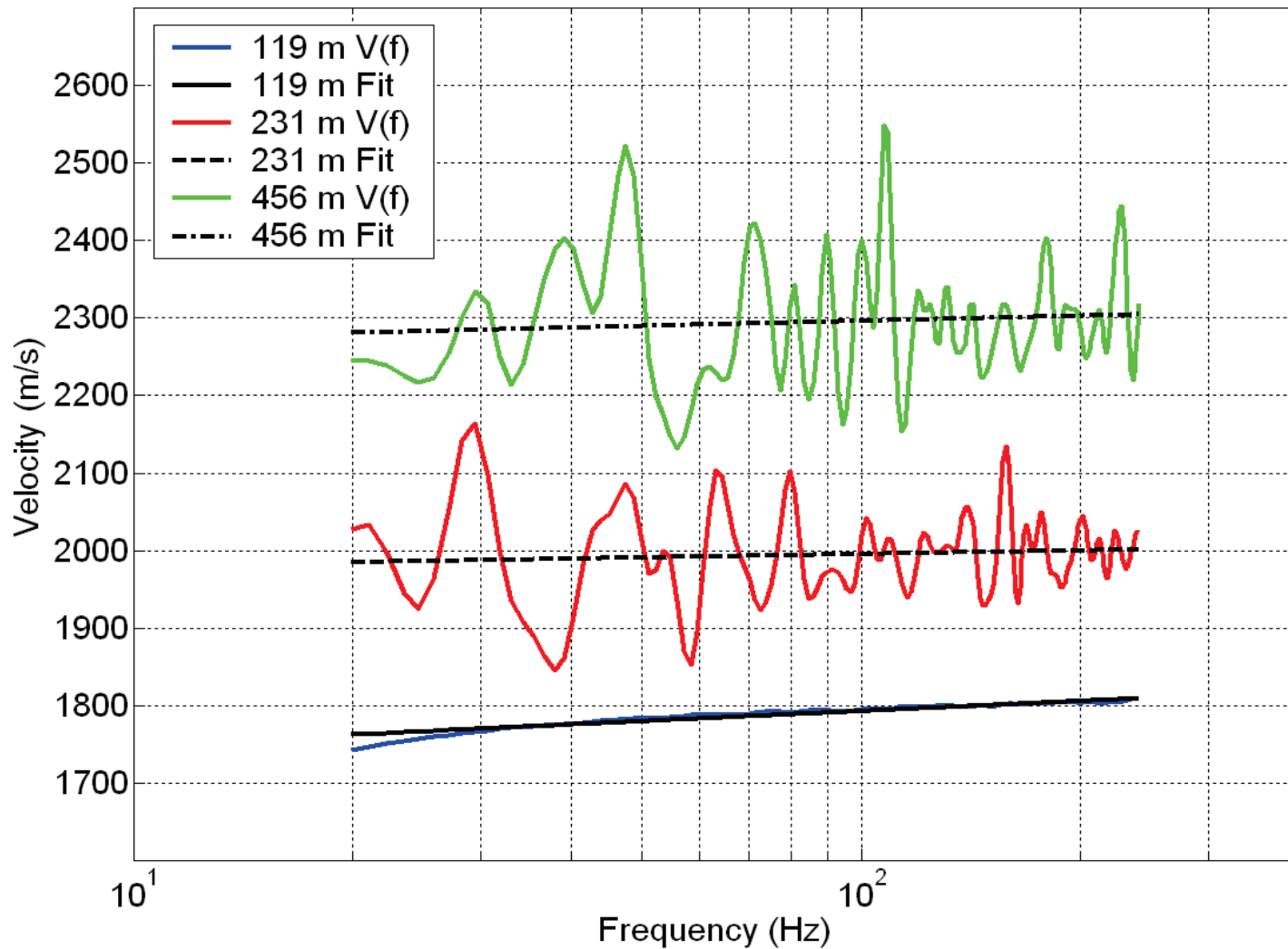
Q-estimate by velocity dispersion method



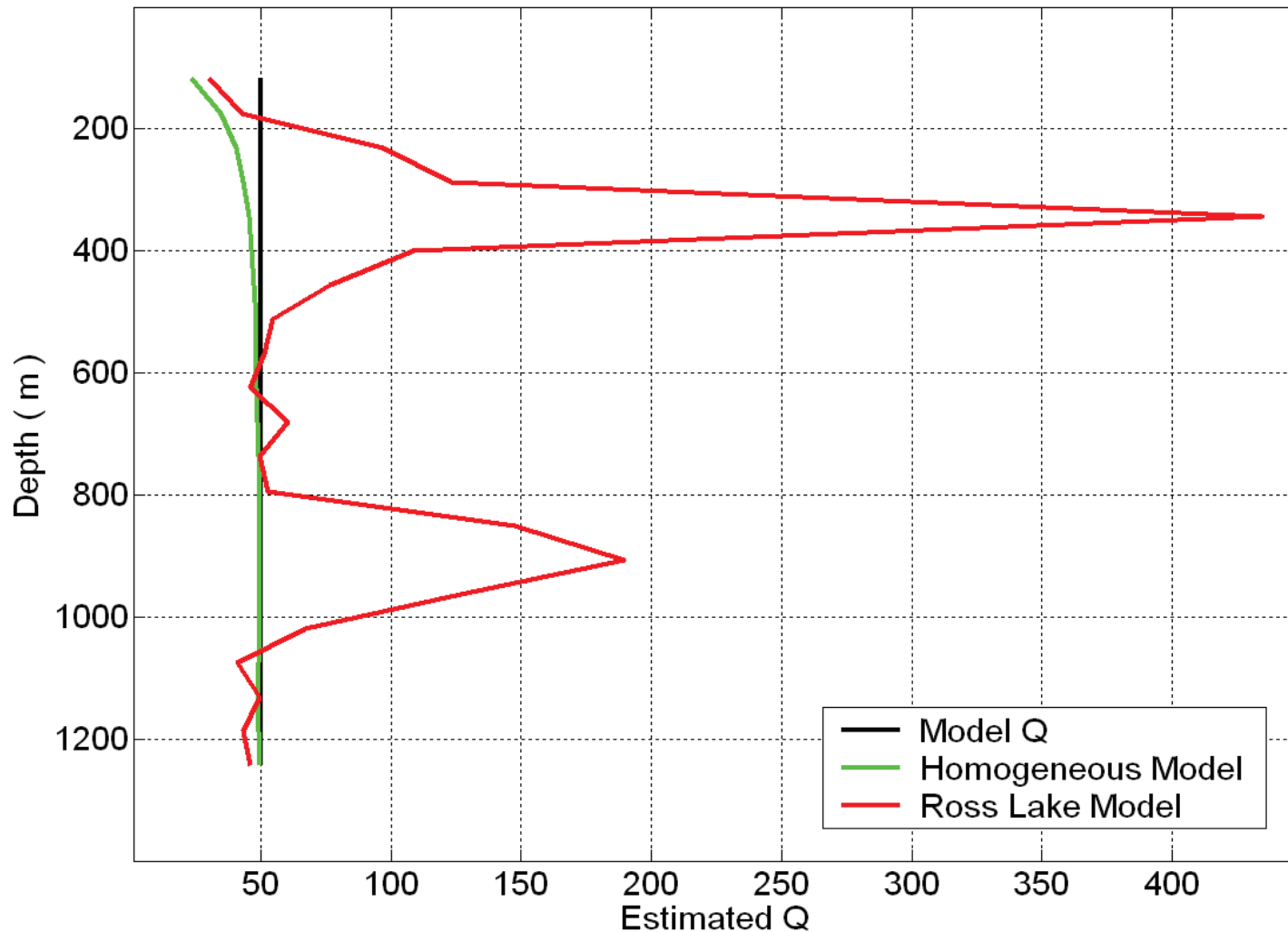
**Ross Lake
Oilfield**



Velocities and densities taken from Ross Lake well-log



$V(f)$ at different depths (Ross Lake model)



Q-estimate by velocity dispersion method (both models)

Conclusions

- ◆ Sample interval size is critical for automated travel time picking.
- ◆ Computed velocity dispersion is quite sensitive to stratigraphic effects.
- ◆ Near-field effects can be observed.
- ◆ Stratigraphic compensation is required for more accurate Q-factor recovery.

Acknowledgements

Support by the CREWES team and its industrial sponsorship is gratefully acknowledged.

Thank you for your attention.

